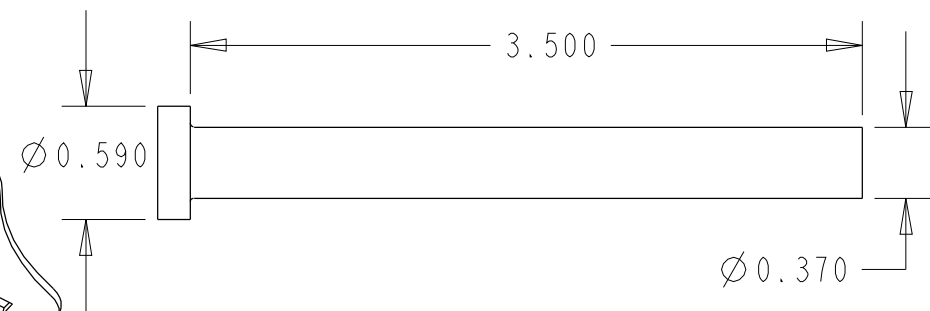
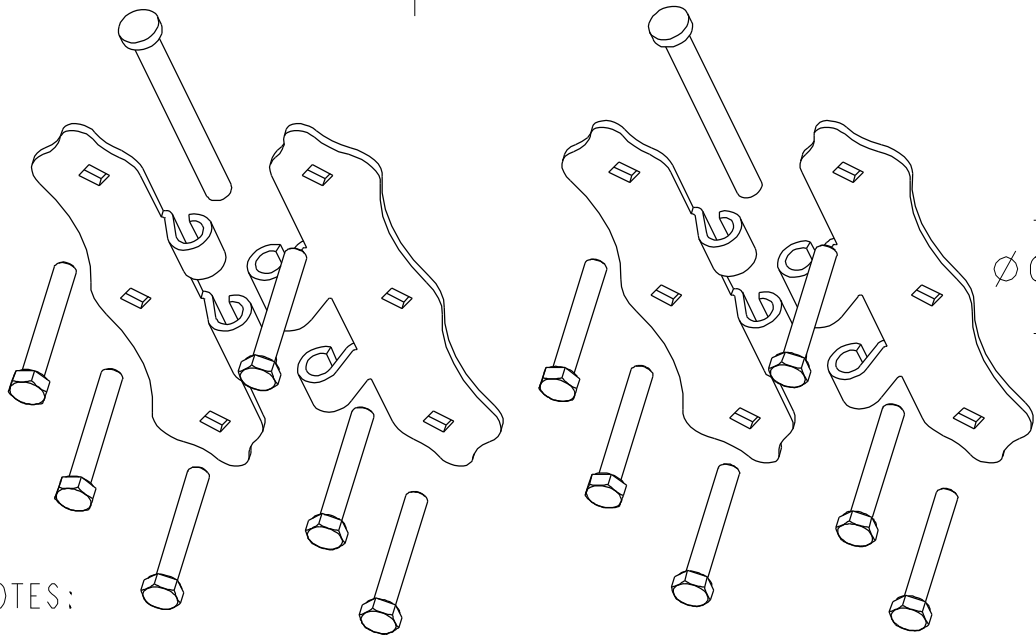
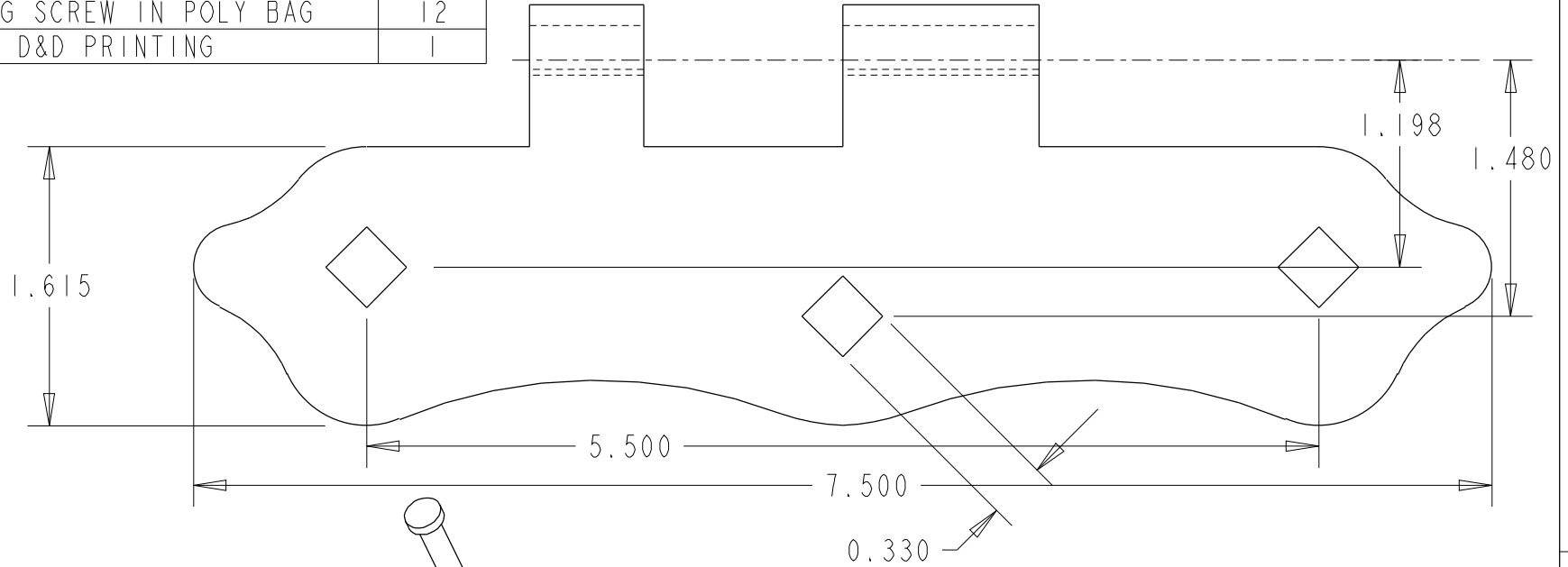


310010

CONTENTS	QTY.
STANLEY 1491 HINGE PAD	4
STANLEY 1491/1492 HINGE PIN	2
5/16" X 2" LAG SCREW IN POLY BAG	12
POLY BAG WITH D&D PRINTING	1

SCALE 1:1



NOTES:

1. DIMENSIONS SHOWN ARE NOMINAL.
2. FASTENERS MUST BE HPC SEAL COATED WITH BLACK POWDERCOATED HEADS PER APPROVED SAMPLE.

HINGE MATERIAL: 0.12" LOW CARBON STEEL.
 PIN MUST BE LUBRICATED WITH APPROVED GREASE.
 REVISED 12/08/2009.

D&D 310010 HINGE