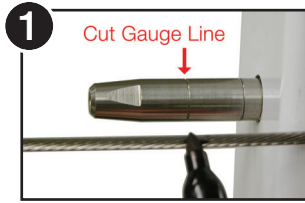


Installation Instructions for the Swageless Quick-Connect® Cable Hardware.

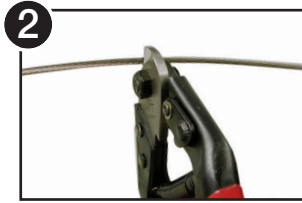
Using the Cut Gauge Line



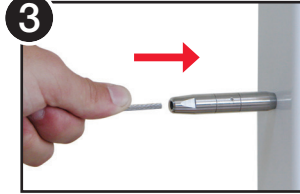
Use the Cut Gauge Line on the Quick-Connect® body to locate and mark the cable for proper trim length. This is typically used when attaching the second in a pair of end fittings.



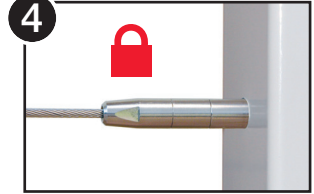
1 Stretch the cable tight. Mark with felt pen at Cut Gauge Line.



2 Trim cable at the mark.



3 Insert cable as far as it will go into fitting. If cable is too long, remove it using a Release Tool and trim as needed.



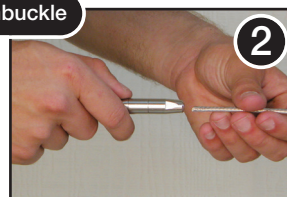
4 Quick-Connect® Jaws lock onto cable automatically. Tighten the cable line using the tension adjustment fitting.

Installing Quick-Connect® Turnbuckle Fittings

Before installing a Quick-Connect® Jaw Turnbuckle, adjust the length of the turnbuckle so that it's set in mid-position (halfway between fully open and fully closed). This will allow optimal adjustment flexibility. The Quick-Connect® Turnbuckle installation is identical to that of the Fixed Surface Mount.



1 Install eyebolt. Remove clevis pin and install Quick-Connect® Fixed Jaw Turnbuckle.



2 Insert cable all the way into Quick-Connect® fitting until it stops. Jaws lock automatically. Spin turnbuckle body to tighten the line.

Jaw Turnbuckle