

Series 6402 Installation Guide for 3/16" Cable Adjust-A-Body[®] Hanger Bolt Tensioner with Push-Lock[™] Threaded Eye Fittings

Materials/tools required _____

- * **Cable Gripping Pliers** — (50TCG1)
Used to grip the cable while tensioning the end fittings without damaging the cable.
[OPTION: Use a piece of rubber hose with vice grips around the cable to prevent scarring.]
- * **Cable Cutter 3/16"**— (82T13)
- * **(2) 7/16" Open-end Wrenches**
- * **5/32" Hex Allen Key**
- * **1/4" Open-end Wrench** or
Hanger Bolt Driver — (20TLBDN4N)
Use with a 5/8" socket to install hanger bolts
- * **Drill**
- * **Drill Bits:**
 - **7/32"**(if there are intermediate posts between terminating end posts)
 - **15/64"** for hanger bolt pilot hole (**1/4"** if installing in extremely hard wood)
 - **'1' & 5/16"-24 Tap** for Threaded Tab.
Drill and tap into .250" wall (min.) steel tube.



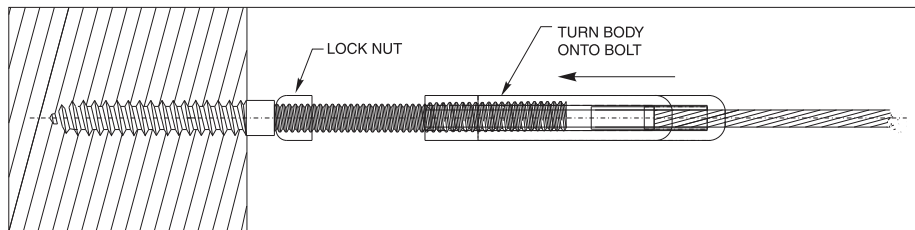
Drill posts _____

Terminating (end) post for Adjust-A-Body[®] with Hanger Bolt tensioner — Drill a 15/64" hanger bolt pilot hole (1/4" if installing in extremely hard wood).

Intermediate post or other element through which the cable will pass between the end posts — Drill 7/32" diameter holes lined up with the holes in the end post through which the cable will pass between end posts.

Install Adjust-A-Body® Hanger Bolt tensioner

1. Drill 15/64" pilot holes (1/4" if installing in extremely hard wood) into one terminating end post where you will be installing the tensioner.
2. Screw the hanger bolts into the holes in the terminating end post.
3. Screw the lock nut onto the machine threads.
4. Slide the body onto the cable, threaded end first, all the way to the end of the cable.
5. Turn the body by hand, onto the threads at least 6 full turns. Do not tension the cables at this point.



String the cable through the holes drilled in your intermediate posts (or other elements through which the cable passes between end posts) and through the end post where you will be installing the Push-Lock™ fitting.

See illustration — Post A is the end post to which the tensioner is attached; Post B is the end post to which the Push-Lock™ fitting is to be attached.

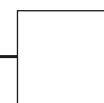
Post A



Adjust-A-Body
with Hanger Bolt



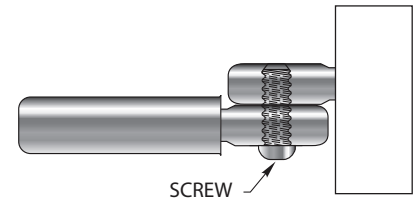
Post B



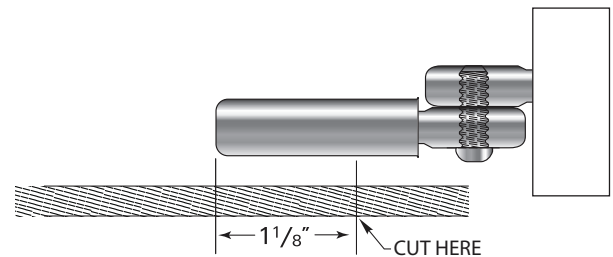
Push-Lock™
Fitting

Install Push-Lock™ Threaded Eye fittings

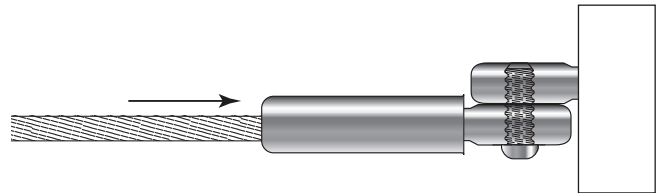
1. Attach the Push-Lock™ Threaded Eye to one terminating end post with a 20HTT4 Threaded Tab or 20HLE4 Lag Eye (ordered separately) or other means with the 11HBS8 screw provided. Tighten the screw with a 5/32" hex wrench. (Use the 'I' Drill and 5/16"-24 Tap to thread the metal post for the Threaded Tab (20HTT4) or the 15/64" drill for wood posts to insert the Lag Eye (20HLE4).)



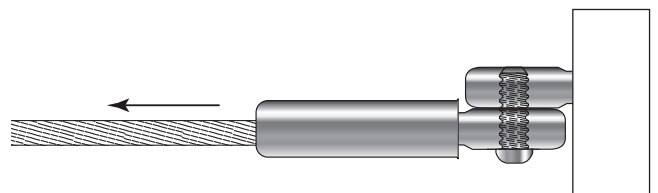
2. Pull the cable tight, and mark the cable at a point 1-1/8" from the end of the fitting opposite the eye. Cut the cable at the mark, using a cable cutter (82T13).



3. Push the cable into the hole in the fitting as far as it will go (approximately 1-1/16"). Twist the cable in the right-hand direction (with the lay of the cable) as you push it into the fitting. You will feel it slide through the jaws inside the stud.

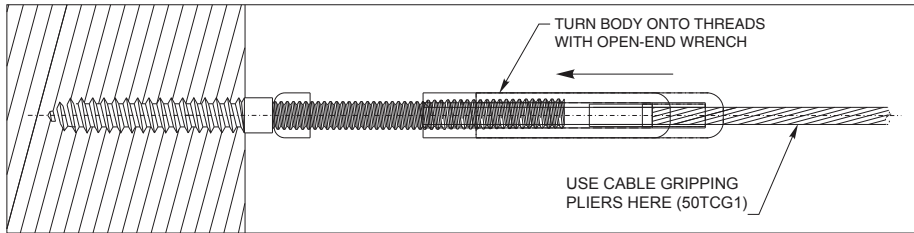


4. Pull the cable, to set the gripping action of the Push-Lock™ fitting.

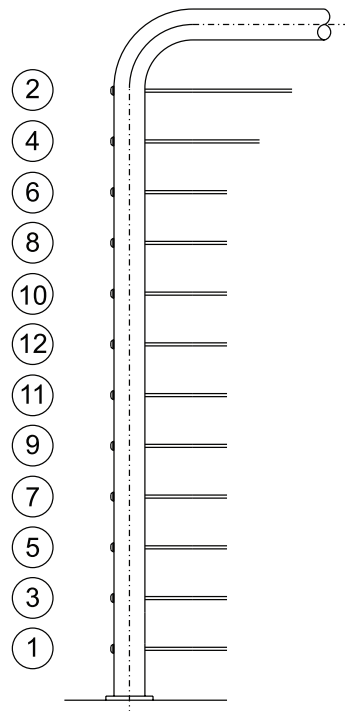


5. Tension the cables:

After all the cables have been installed in both end posts, tension the cables on the other end to approximately 150 lbs. per cable by holding the cable with Cable Gripping Pliers (50TCG1) closely behind the body as you turn the body onto the threads with a 7/16" open-end wrench.



Tension in sequence, beginning with the outside cables and moving from side to side toward the centre



RECOMMENDED TENSIONING SEQUENCE

6. With (2) 7/16" open-end wrenches, tighten the lock nut against the body of the fitting.

